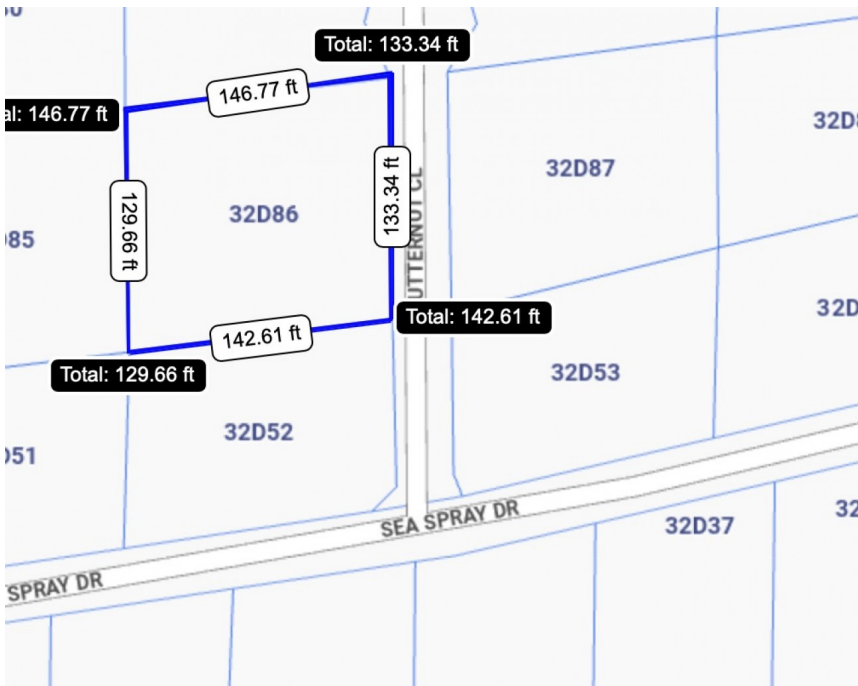




FOR SALE

KYD\$225,000

Pending/Conditional



Large piece of land in Beach Bay, 0.43 acres, 20ft + above sea level and 5 mins walk to sandy beach and new Mandarin Oriental hotel about to be built.

Location:

Savannah / Lower Valley

Features:

- Garden View
- Low Density Residential



SCAN ME TO FIND OUT MORE

MLS: 413321

Samantha Payne

Sales Associate
samantha.payne@remax.ky

+1 (345) 233 5227

remax.ky

member of cireba



FOR SALE
KYD\$225,000

Pending/Conditional

Property Features

Location **Savannah / Lower Valley**
Type **Low Density Residential**

MLS # **413321**

View **Garden View**

Additional Information

Title **Freehold**

Water Frontage

No

Running Costs

Sewage in
Maintenance
Costs **No**

AC in
Maintenance
Costs **No**

Gardening in
Maintenance
Costs **No**

TV in
Maintenance
Costs **No**

Insurance
Included in
Maintenance **No**

Pest in
Maintenance
Costs **No**



Samantha Payne

Sales Associate
samantha.payne@remax.ky

+1 (345) 233 5227

remax.ky

member of  **cireba**