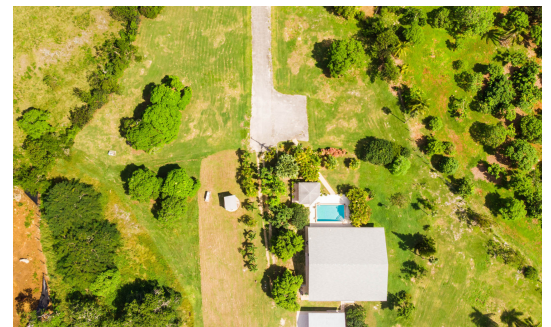


**FOR SALE**  
**KYD\$1,875,000**

Current








3.52 acres of picturesque land in Lower Valley. Total of six subdivided lots, four vacant & two have a 4,000 sf, 4 bed, 2 bath house incl. double garage, pool & gazebo. Property offers a variety of development opportunities or make your own personal oasis. Located 10 mins from Countryside & 30 mins from GT, Camana Bay & SMB.

**Location:**

 **Savannah / Lower Valley**

**Features:**

-  **4000 Sq Ft.**
-  **4 Bedrooms**
-  **2 Bathrooms**
-  **Garden View**
-  **Low Density Residential**



**SCAN ME TO FIND OUT MORE**

**MLS: 413831**





**FOR SALE**  
**KYD\$1,875,000**

Current



**Kerstin Stiebel**

Sales Associate  
kerstin.stiebel@remax.ky

**+1 (345) 233 5120**

remax.ky

member of  **cireba**



**FOR SALE**  
**KYD\$1,875,000**

Current

### Property Features

Location	<b>Savannah / Lower Valley</b>	MLS #	<b>413831</b>	View	<b>Garden View</b>
Beds	<b>4</b>	Bathrooms	<b>2</b>	Sq. Ft	<b>4000</b>
Year	<b>1984</b>	Type	<b>Low Density Residential</b>		

### Building Features

- Breakfast area
- Cable TV
- City Water
- Den
- Dining area
- Dishwasher
- Family room
- Garage: 2
- Kitchen area

### Additional Information

Title	<b>Freehold</b>	Class	<b>Existing</b>	Total # of Units	<b>1</b>
Construction	<b>Block</b>	Water Frontage	<b>No</b>	Floor Level	<b>1</b>
Stories	<b>1</b>	Foundation	<b>Slab</b>		

### Running Costs

Sewage in Maintenance Costs	<b>No</b>	AC in Maintenance Costs	<b>No</b>	Gardening in Maintenance Costs	<b>No</b>
TV in Maintenance Costs	<b>No</b>	Insurance Included in Maintenance	<b>No</b>	Pest in Maintenance Costs	<b>No</b>



**Kerstin Stiebel**

Sales Associate  
kerstin.stiebel@remax.ky

**+1 (345) 233 5120**

remax.ky

member of  **cireba**