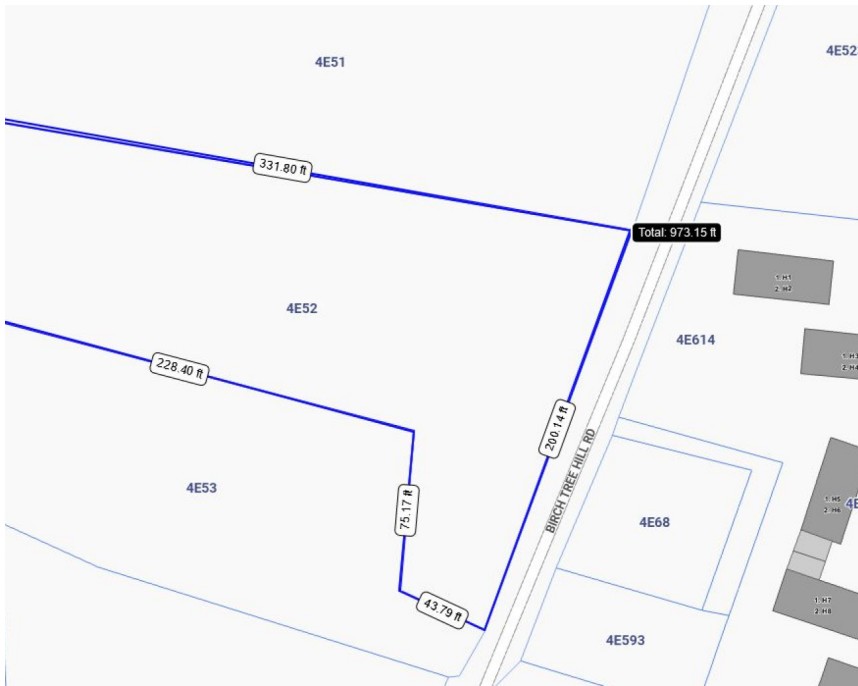




FOR SALE

KYD\$765,000

Pending/Conditional



Incredible opportunity to purchase a beautiful 0.80 acre High Density Residential parcel in West Bay North West. The land has a perfect shape for development would allow 20 units with 24 total bedrooms. The property also has a Caymanian Cottage which includes four bedrooms and two bathrooms. Photo Credit Government Lands In Survey Webs

Location:

West Bay

Features:

- Garden View, Inland**
- High Density Residential**



SCAN ME TO FIND OUT MORE

MLS: 414471

Mark Gaus

Sales Associate
mark.gaus@remax.ky

+1 (345) 946 9961

Stephen Rivers

Sales Associate
stephen.rivers@remax.ky

+1 (345) 233 5229

remax.ky

member of **cireba**



FOR SALE
KYD\$765,000

Pending/Conditional

Property Features

Location **West Bay**
Type **High Density Residential**

MLS # **414471**

View **Garden View, Inland**

Additional Information

Water Frontage

No

Running Costs

Sewage in Maintenance Costs **No**

AC in Maintenance Costs **No**

Gardening in Maintenance Costs **No**

TV in Maintenance Costs **No**

Insurance Included in Maintenance **No**

Pest in Maintenance Costs **No**

Mark Gaus

Sales Associate
mark.gaus@remax.ky

+1 (345) 946 9961

Stephen Rivers

Sales Associate
stephen.rivers@remax.ky

+1 (345) 233 5229

remax.ky

member of **cireba**