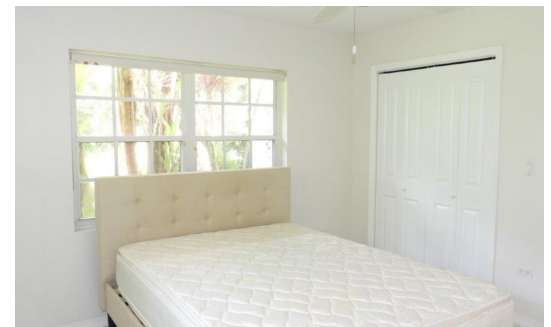


FOR SALE

KYD\$799,000

Current








Are you looking for a lush tropical, secluded location within minutes to George Town/South Sound? If so welcome to Orchid Village, a small upscale townhouse community of 8 units perfectly situated within lush tropical flora. Access off Walker's Rd.

Location:

 **South Sound**

Features:

-  **1843 Sq Ft.**
-  **3 Bedrooms**
-  **3 Bathrooms**
-  **Garden View**
-  **Condominium**



SCAN ME TO FIND OUT MORE

MLS: 414916

Edna Ebanks

Sales Associate
 edna.ebanks@remax.ky

+1 (345) 949 0681

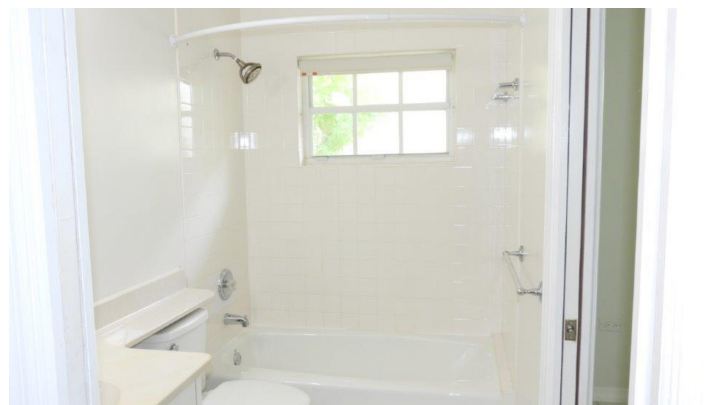
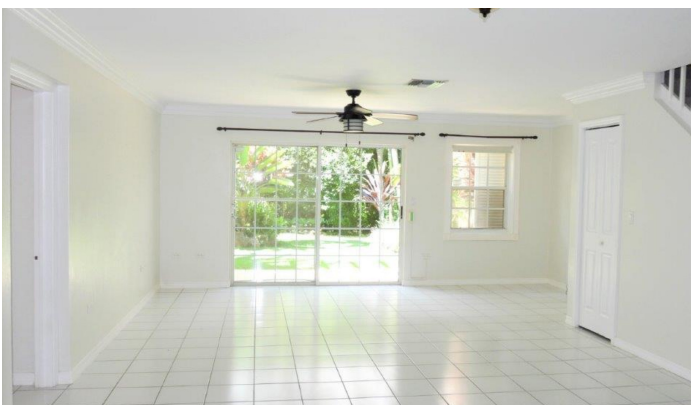
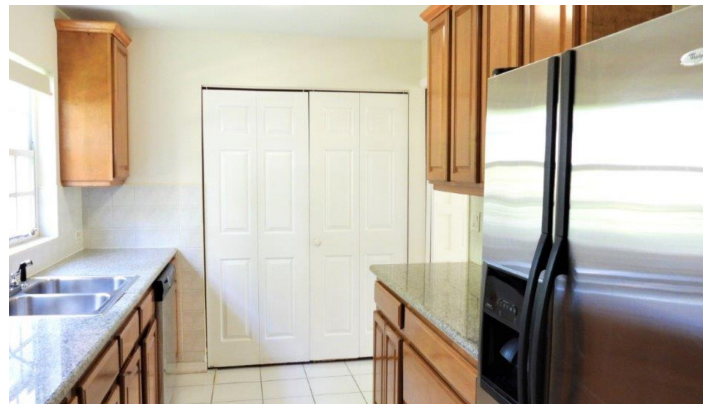
remax.ky

member of  **cireba**



FOR SALE
KYD\$799,000

Current



Edna Ebanks

Sales Associate
edna.ebanks@remax.ky

+1 (345) 949 0681

remax.ky

member of **cireba**



FOR SALE
KYD\$799,000

Current

Property Features

Location **South Sound**
Beds **3**
Year **1990**

MLS # **414916**
Bathrooms **3**
Type **Condominium**

View **Garden View**
Sq. Ft **1843**

Building Features

- Cable TV
- City Water
- Dining area
- Dishwasher
- Fence
- Furnished: Partially
- Kitchen area
- Living room
- Microwave

Additional Information

Aprx Water Frontage **1**
Class **Existing**
Land Certificate **Not Issued**
Stories **2**

Furnished **Partially**
Total # of Units **8**
Water Frontage **No**
Foundation **Slab**

Title **Freehold**
Construction **Block**
Floor Level **1**
Strata # **133**

Running Costs

Monthly Insurance **CI\$296**
Monthly Maintenance Costs **CI\$725**
Insurance Included in Maintenance **No**

Sewage in Maintenance Costs **Yes**
Gardening in Maintenance Costs **Yes**
Pest in Maintenance Costs **No**

AC in Maintenance Costs **No**
TV in Maintenance Costs **No**



Edna Ebanks

Sales Associate
edna.ebanks@remax.ky

+1 (345) 949 0681

remax.ky

member of  **cireba**