



FOR SALE
KYD\$659,000

Current








Incredibly constructed Family Home on Christian Berry Drive in Lower Valley. Within walking distance to Countryside Shopping Village, this 2,848sq ft 2 Bed 2.

Location:

 **Savannah / Lower Valley**

Features:

-  **2848 Sq Ft.**
-  **2 Bedrooms**
-  **2.5 Bathrooms**
-  **Garden View**
-  **Single Family Home**



SCAN ME TO FIND OUT MORE

MLS: 414976



Mitchell Hillier

Sales Associate
mitchell.hillier@remax.ky

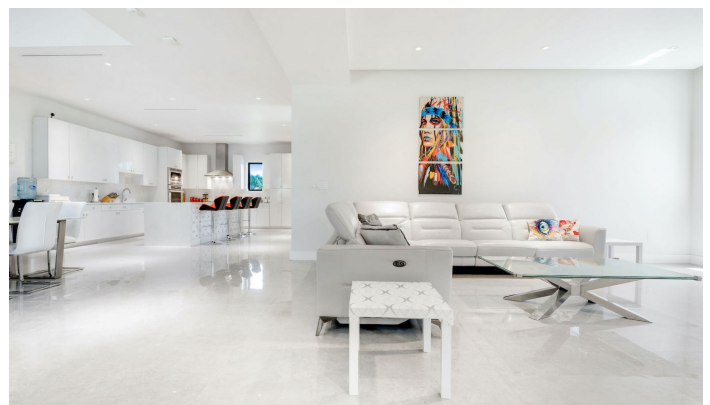
+1 (345) 233-1375

remax.ky

member of  **cireba**

FOR SALE
KYD\$659,000

Current



Mitchell Hillier

Sales Associate
mitchell.hillier@remax.ky

+1 (345) 233-1375

remax.ky

member of  **cireba**



FOR SALE
KYD\$659,000

Current

Property Features

| | | | | | |
|----------|--------------------------------|-----------|---------------------------|--------|--------------------|
| Location | Savannah / Lower Valley | MLS # | 414976 | View | Garden View |
| Beds | 2 | Bathrooms | 2.5 | Sq. Ft | 2848 |
| Year | 2017 | Type | Single Family Home | | |

Building Features

- | | | |
|------------------|------------------|----------------|
| ● Breakfast area | ● Dishwasher | ● Kitchen area |
| ● City Water | ● Family room | ● Living room |
| ● Dining area | ● Furnished: Yes | ● Microwave |

Additional Information

| | | | | | |
|--------------|--------------|------------------|-----------------|----------------|-----------------|
| Furnished | Yes | Title | Freehold | Class | Existing |
| Construction | Block | Land Certificate | Issued | Water Frontage | No |
| Floor Level | 1 | Stories | 2 | Foundation | Slab |

Running Costs

| | | | | | |
|-----------------------------|-----------|-----------------------------------|-----------|--------------------------------|-----------|
| Sewage in Maintenance Costs | No | AC in Maintenance Costs | No | Gardening in Maintenance Costs | No |
| TV in Maintenance Costs | No | Insurance Included in Maintenance | No | Pest in Maintenance Costs | No |



Mitchell Hillier

Sales Associate
mitchell.hillier@remax.ky

+1 (345) 233-1375

remax.ky

member of  **cireba**