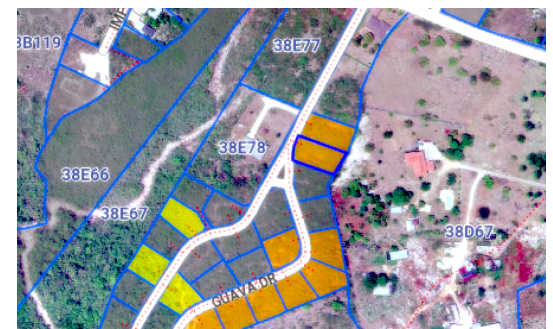
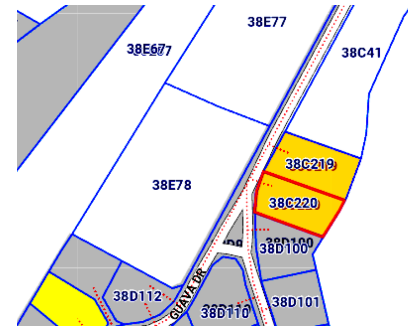




FOR SALE

KYD\$235,000

Current



Excellent location and easy access to Countryside Shipping Center, Bodden Town public beach, and School. This property is filled and ready for your dream home or your next investment project.

Location:

 **Savannah / Lower Valley**

Features:



Inland



Low Density Residential



SCAN ME TO FIND OUT MORE

MLS: 415016

Lavern Welcome

Sales Associate
lavern.welcome@remax.ky

+1 (345) 233-5228

remax.ky

member of  **cireba**

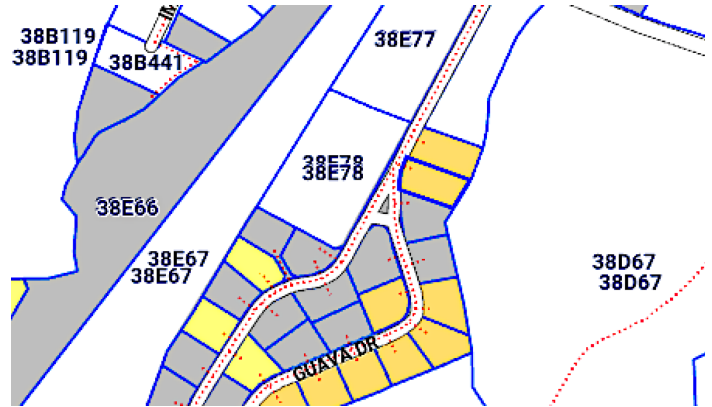
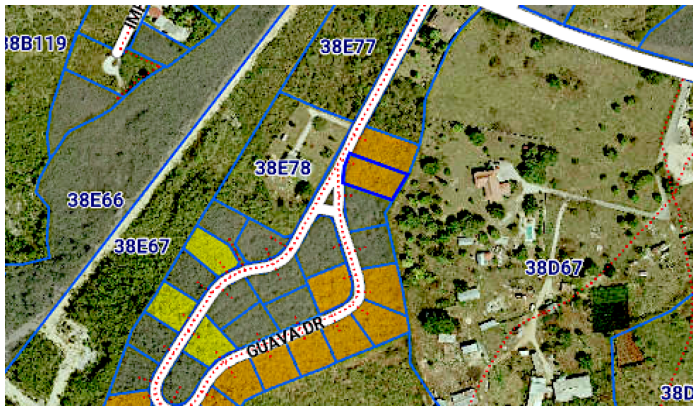


RE/MAX
CAYMAN ISLANDS



FOR SALE
KYD\$235,000

Current



Lavern Welcome

Sales Associate
lavern.welcome@remax.ky

+1 (345) 233-5228

remax.ky

member of  **cireba**



FOR SALE
KYD\$235,000

Current

Property Features

Location **Savannah / Lower Valley**
Type **Low Density Residential**

MLS # **415016**

View **Inland**

Additional Information

Water Frontage

No

Running Costs

Sewage in Maintenance Costs **No**

AC in Maintenance Costs **No**

Gardening in Maintenance Costs **No**

TV in Maintenance Costs **No**

Insurance Included in Maintenance **No**

Pest in Maintenance Costs **No**



Lavern Welcome

Sales Associate
lavern.welcome@remax.ky

+1 (345) 233-5228

remax.ky

member of  **cireba**