



FOR SALE
USD\$1,749,000

Current



We are beyond delighted to represent Estate Lot #15 in the most exclusive Waterfront subdivision in the Cayman Islands, Diamond's Edge. Emerging from the shores of Grand Cayman's North Sound, this development is a true work of art.

Location:

 **Seven Mile Corridor**

Features:



Canal Front, Water Front



Beach/Hotel/Tourism



SCAN ME TO FIND OUT MORE

MLS: 415122



Alan O'Connell

Sales Associate
alan.oconnell@remax.ky

+1 (345) 233 5222

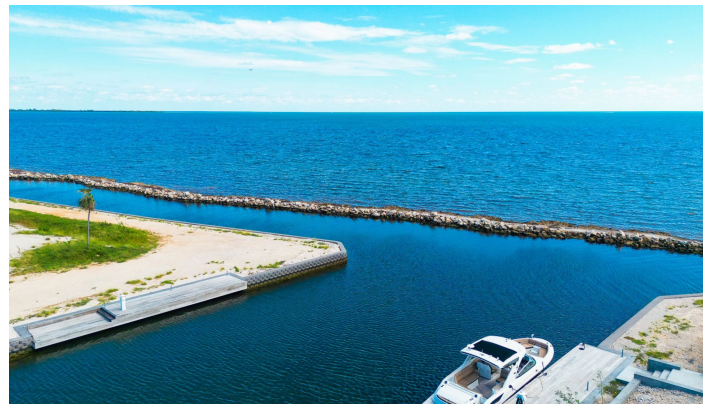
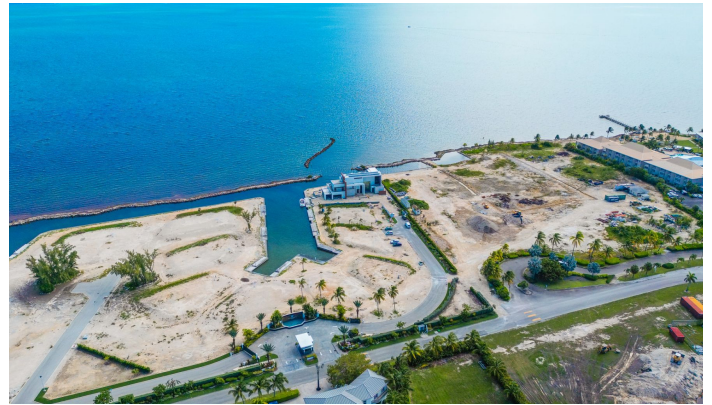
remax.ky

member of  **cireba**



FOR SALE
USD\$1,749,000

Current



Alan O'Connell

Sales Associate
alan.oconnell@remax.ky

+1 (345) 233 5222

remax.ky

member of  **cireba**



FOR SALE
USD\$1,749,000

Current

Property Features

Location **Seven Mile Corridor** MLS # **415122** View **Canal Front, Water Front**
Type **Beach/Hotel/Tourism**

Building Features

- Dock
-
-

Additional Information

Aprx Water Frontage **Yes** Water Frontage **No**

Running Costs

| | | | | | |
|-----------------------------|-----------|-----------------------------------|-----------|--------------------------------|-----------|
| Sewage in Maintenance Costs | No | AC in Maintenance Costs | No | Gardening in Maintenance Costs | No |
| TV in Maintenance Costs | No | Insurance Included in Maintenance | No | Pest in Maintenance Costs | No |



Alan O'Connell

Sales Associate
alan.oconnell@remax.ky

+1 (345) 233 5222

remax.ky

member of  **cireba**