



# FOR SALE

## KYD\$390,000

Current



This stunning new large 2 bedrooms / 2 bathrooms with high-quality fittings, spacious closets, and a contemporary designed Master Bathroom suite with high-quality fittings and appliances. This beautiful home has a warm and welcoming entrance that leads into your spacious living, dining, and kitchen area.

#### Location:

**East End**

#### Features:

- 1555 Sq Ft.**
- 2 Bedrooms**
- 2 Bathrooms**
- Inland**
- Semi-Detached/Duplex/Triplex**



**SCAN ME TO FIND OUT MORE**

**MLS: 415572**

### Lavern Welcome

Sales Associate  
lavern.welcome@remax.ky

**+1 (345) 233-5228**

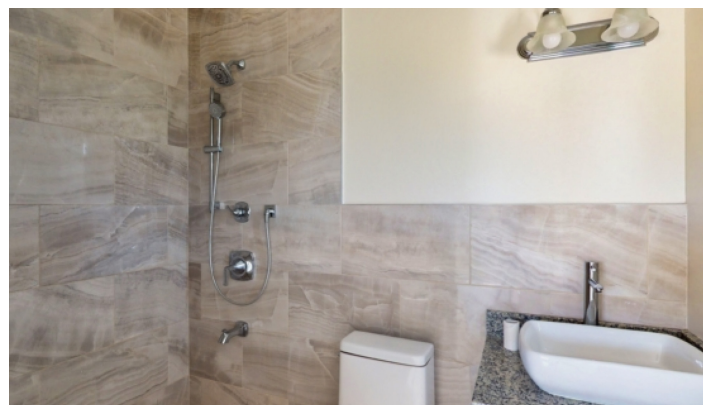
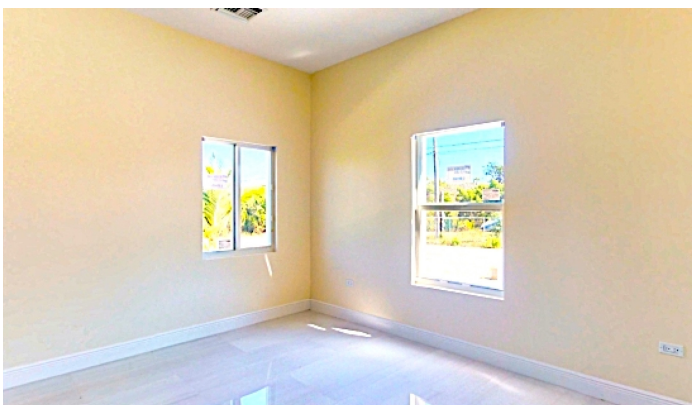
remax.ky

member of **cireba**



**FOR SALE**  
**KYD\$390,000**

Current



**Lavern Welcome**

Sales Associate  
lavern.welcome@remax.ky

**+1 (345) 233-5228**

remax.ky

member of **cireba**



**FOR SALE**  
**KYD\$390,000**

Current

### Property Features

Location **East End**  
Beds **2**  
Year **2022**

MLS # **415572**  
Bathrooms **2**  
Type **Semi-Detached/Duplex/Triplex**

View **Inland**  
Sq. Ft **1555**

### Building Features

- Central AC
- Dining area
- Furnished: Partially
- Kitchen area
- Living room
- Microwave
- Refrigerator
- Washer/Dryer: Yes

### Additional Information

Furnished **Partially**  
Construction **Concrete**

Title **Freehold**  
Water Frontage **No**

Total # of Units **2**

### Running Costs

Monthly Insurance **CI\$1**  
Gardening in Maintenance Costs **No**  
Pest in Maintenance Costs **No**

Sewage in Maintenance Costs **No**  
TV in Maintenance Costs **No**

AC in Maintenance Costs **No**  
Insurance Included in Maintenance **No**



**Lavern Welcome**

Sales Associate  
lavern.welcome@remax.ky

**+1 (345) 233-5228**

remax.ky

member of  **cireba**